

FITC Anti-Mouse CD25 Monoclonal Antibody



天津三箭生物技术股份有限公司
Tianjin Sungene Biotech Co., Ltd.
精准 高效 稳定 Precision Efficient Stable

Catalog Number	Vial Size
M10251-02B	50 µg
M10251-02E	500 µg

Market | 400-621-0003
marketing@sungenebiotech.com

Support | 022-66211636-8024
techsupport@sungenebiotech.com

Web | www.sungenebiotech.com

Important Note: Centrifuge before opening to ensure complete recovery of vial contents.
This product is guaranteed up to one year from purchase.

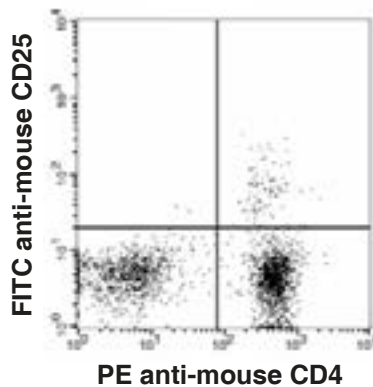
Purified Antibody Characterization

Clone	Isotype	Reactivity
PC-61.5.3	Rat IgG1	Mouse

Description

CD25 is a 55 kD glycoprotein also known as the low affinity IL-2R α , Ly-43, p55, or Tac. It is expressed on activated T and B cells, thymocyte subset, pre-B cells, and T regulatory cells. In association with CD122 (IL-2R β) and CD132 (common γ chain), CD25 forms the high affinity signaling IL-2 receptor.

Illustration of Immunofluorescent Staining



C57BL/6 mouse splenocytes stained with FITC anti-mouse CD25 and PE anti-mouse CD4

Product Information

Conjugation: FITC

Formulation: PBS pH 7.2, 0.09% NaN₃, 0.2% BSA

Concentration: 0.5 mg/ml

Storage: Keep as concentrated solution. Store at 4°C and protected from prolonged exposure to light. **Do not freeze.**

Application: Recommended Application: FC

Usage: Each lot of this antibody is quality control tested by immunofluorescent staining with flow cytometric analysis (The amount of the reagent is suggested to be used $\leq 1.0 \mu\text{g} / 10^6$ cells in 100 μl). Since applications vary, the appropriate dilutions must be determined for individual use.

References

- [1] Taniguchi, T., et al. 1993. Cell 73:5.
- [2] Waldmann, T.A., 1991. J. Biol. Chem. 266:2681.
- [3] Read, S., et al. 2000. J. Exp. Med. 192:295.
- [4] Lowenthal, J.W., et al. 1985. J. Immunol. 135:3988.

For Research Use Only.